



Weekly Newsletter

Spring Term 2

Friday, 7th March 2025



A Message from our Headteacher

Dear Parents,
What a lovely week we have had at Grange. We have welcomed the sun this week and finally said goodbye to the rain (well for at least a few days). This week the senior leadership team have had the great pleasure to look at writing across the school. It has been fantastic to see such lovely pieces of written work from across the school. The classes have worked hard on some fantastic topic work which is now beautifully displayed in the middle hall.

World Book Day

Well done to everyone for the amazing costumes and creativity shown on Thursday. Thanks to Miss Amanda Matheson for her organisation and fantastic word hunt organised at playtime! The children had a great day investigating books.
Don't forget to encourage your children to get reading and start collecting sponsorship money for the amount of time or number of pages they read! Please share our school Just Giving page with your family and friends and help raise funds for books at Grange!



Online Safety Tip of the Week

Child Friendly Search Engines:
When children are searching on the internet, there are times when they may be exposed to inappropriate content. It is important to remind children what to do if they see something that makes them worried, upset or scared. Let them know that if they see something that makes them feel like this, they should close the page down or turn the device over, then let an adult know what they have seen. Alternatively, if there is a device that your child uses often, you can get them to use a child-friendly search engine. There are several different ones, but here are two you could try: <https://swiggle.org.uk/> <https://www.kiddle.co/>

Secondary School Place Offer

Congratulations to the many children in year 6 for securing a school place for next year. If you are not happy with your offered space you must contact school admissions. 020 7525 5337 schools.admissions@southwark.gov.uk to appeal the decision.

Science Week

Next week is science week, the children in year 2-6 will be visiting the Natural History Museum or the Science Museum and year 1 and Early years will be having a special science demonstration at school. There will be many exciting science activities taking place across the week for the children to join in with. Look out for Mr Crewe's special science newsletter which will be sent out on Monday. It includes this year's fantastic science competition where great prizes can be won!
<https://www.britishtscienceweek.org/>

London Philharmonic Orchestra

Many of the year groups have recently visited the London Philharmonic Orchestra and have been lucky enough to listen to their amazing concerts. There are some great performances taking place during weekends so please take a look at these fabulous experiences which you might be able to book for your family!
<https://lpo.org.uk/event/funharmonics-the-snail-and-the-whale/>

hope you have an enjoyable weekend, and we will see you all on Monday at 8.50am.

Rebecca



Weekly Newsletter

Spring Term 2

Friday, 7th March 2025



School Information

Attendance & Punctuality Class Winners of the Week








School year: Spring Term	Class	%
Attendance KS1 Winner	Venus	97.9
Attendance KS2 Winner	Aurora	97.1
KS1 Punctuality Winner	Venus	98.6
KS2 Punctuality Winner	Aurora	98.1
Rest of School		
Class	Punctuality %	Attendance%
Moon	100	95.3
Star	91.7	91.7
Venus	98.6	97.9
Mercury	95.1	84.7
Earth	96.9	93.3
Jupiter	94.9	89.2
Saturn	92.5	95.6
Galaxy	96.6	94.4
Neptune	97.0	94.8
Pluto	97.8	96.4
Aurora	98.1	97.1
Sky	94.8	95.8
Total Weekly Attendance:		94%

Dates for the Diary



WB 10/03/25	Science Week - CHANGE AND ADAPT
17/03/25	St Patricks Day
21/03/25	Red nose Day
WB 24/03/25	Shakespeare Week
28/03/25	House winner's prize trip
31/03/25	Cooking week
04/04/25	Last Day for the children
Easter Holidays	Monday 7th April - Monday 21st April
22/04/25	Staff and children return to school for Summer term

House Winners

Tim PEAKE 	464
Stephanie WILSON 	432
Neil ARMSTRONG 	495
Helen SHARMAN 	535
Bernard HARRIS 	418

Attendance Ladder

How close is your child to 100%?

0 days off school	100%	Perfection
Equates to 2 days off school each year	99%	Excellent
Equates to 5 days off school each year	97%	Good
Equates to 10 days off school each year	95%	Slight Concern
Equates to 20 days off school each year	90%	Concerned
Equates to 30 days off school each year	85%	Very Concerned



Weekly Newsletter

Spring Term 2

Friday, 7th March 2025



Word of the Week

The word of the week this week is "mediocre". Please spend some time discussing this word with your child.

Shinobi Word of the Day

Word of the Day: **mediocre** (me-di-o-cre)
 Word Class (adjective)

Pronunciation / Syllables

Definition:

If you describe something as mediocre, you mean that it is of average quality, but you think it should be better.



Mary thought her essay was **mediocre**.

Synonym:	Antonym:	Prefix / Suffix:	Rhyme:	Link Word:
dull ordinary	excellent exceptional		broker poker	hopelessly feel

Value of the Week

The value of the week this week was "hope". Please take some time over the weekend to discuss this value with your children.

"Children are the world's most valuable resource and its best hope for the future"



Happy Birthday to You!

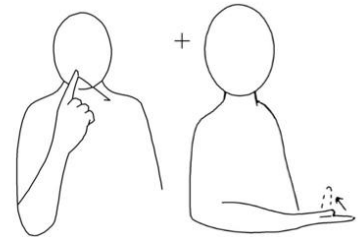
First Name	Class	Age
Yana	Jupiter	8
Anabia	Star	5
Amal	Galaxy	9



Makaton Word of the Week

Along with our word of the week, our children will now be learning some sign language. We have many pupils at Grange that are non-verbal and one of the ways in which we communicate with them is to use sign language. We want all our children to be able to communicate with each other so felt that teaching our children to sign would help this. Please help us to learn together by practising this with your child at home.

Said



Mathletics



Winning Class: **Aurora Class**
 School's total points: **228,450**



Weekly Newsletter

Spring Term 2

Friday, 7th March 2025



Class Gallery

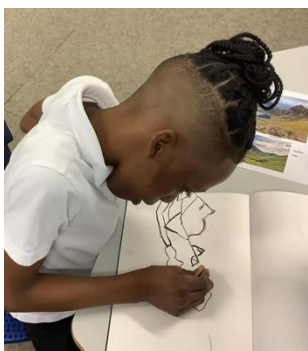
Year 5 – Pluto and Neptune Class

In their art lesson this week, Year 5 used oil pastels to recreate David Hockney's vibrant, bold landscapes! 🌻



Year 3 – Saturn and Jupiter Class

Year 3 have experimented with using charcoal to draw a mountain landscape. They started with some mark making; and then when they felt confident handling the charcoal, they created images of some of the UK's most famous mountains.





Weekly Newsletter

Spring Term 2

Friday, 7th March 2025



Rewards

Years EYFS, 1 & 2

Core Value: **Hope**
Year 1 and Year 2

Class:	VIP of the week	Reason for Award:
Venus	Aria	For coming into school every day this week positive.
Mercury	Kemi	For her positive attitude towards her learning
Planet Earth	Kashaun	For being positive during his phonic sessions this week

Class	Writer of the week	Reason
Venus	Hunter	For using inverted commas for speech correctly.
Mercury	Ifza	For her super sentences about the bear
Planet Earth	Karim	For using past tense verbs correctly to describe an event.

Class	Mathematician of the week:	Reason:
Venus	Nancy	For her fantastic understanding of subtraction and addition within 20
Mercury	Luciana	For great use of our sentence stems
Planet Earth	Martina	For excellent effort when using arrays to prove a multiplication equation

Class:	Reader of the week:	Reason for Award
Venus	Grace	For amazing fluency with her reading
Mercury	Layla	For her fabulous phonics
Planet Earth	Harley	For reading fluently and making a big effort on using expression



Weekly Newsletter

Spring Term 2

Friday, 7th March 2025



Rewards

Years 3 to 6

Core Value: **Hope**
Years 3 to 6

Class:	VIP of the week	Reason for Award:
JUPITER	Ubaydah	For really trying to improve his contribution to his learning in small steps.
SATURN	Betsie	For showing hope and good initiative in class this week!
GALAXY	Erica	Always trying her best in all lessons!
PLUTO	Soraya	For always striving to do her best!
NEPTUNE	Angel	For always being kind and helpful in the classroom.
AURORA	Elias	For his excellent motivation to learn
SKY	Oriana	For fantastic behaviour and focus in class
Class	Writer of the week	Reason
JUPITER	Isabella	For her fantastic diary entry.
SATURN	Roman	For his good use of questioning this week!
GALAXY	Eimy-Sophia	For trying really hard with her writing and not giving up!
PLUTO	Alara-Marie	For writing great advice to the fisherman.
NEPTUNE	Kgomotso	for writing a very well-structured speech about kindness this week!
AURORA	Frankie	For writing her own captivating Greek myth
SKY	Sana	For excellent effort using a model to help her write an assessment piece.

Class	Mathematician of the week:	Reason
JUPITER	Santana	For his brilliant fractions reasoning.,
SATURN	Enzo	for a great effort showing his working out!
GALAXY	Arman	For always being so enthusiastic in our maths lessons
PLUTO	Stephen	For a great effort in his maths lessons this week!
NEPTUNE	Ella-Mae	For great focus on fractions this week!
AURORA	Celina	For her excellent work converting fractions
SKY	Hafsah	For excellent effort converting measurements.

Class:	Reader of the week:	Reason
JUPITER	Parker	For her love of reading and giving us a brilliant book review on Matilda.
SATURN	Issam	For excellent reading aloud!
GALAXY	Aya	For a huge effort with her phonics when reading!
PLUTO	Jamal	For his increased confidence in his reading.
NEPTUNE	Daniella	For clear and confident reading aloud during guided this week.
AURORA	William	For reading in assembly with great confidence
SKY	Younus	For trying hard during guided reading tasks.



Weekly Newsletter
Spring Term 2
Friday, 7th March 2025



Parent/ Carer Information and Support



South London Children and
Young People's Community
Immunisation Service

Missed your flu vaccine?

Live or attend school in the boroughs of
Lambeth or Southwark? Aged 2-19?
Come down to a flu catch-up clinic and
protect yourself this winter!

Saturday 8 March, 10:15 - 14:00
1st Place Family Hub, SE5 0RN

Saturday 15 March, 10:00 - 14:00
Longfield Hall, SE5 9QY

Saturday 22 March, 10:15 - 14:00
1st Place Family Hub, SE5 0RN

Saturday 29 March, 10:00 - 14:00
Longfield Hall, SE5 9QY

**Our clinics are walk-in, so no need to book
an appointment.**

Call 020 8614 5495 for more information



**INTERNATIONAL
WOMEN'S DAY EVENT
(INTERGENERATIONAL)**

CELEBRATING WOMEN'S DIVERSITY -OUR STORIES!

**SATURDAY 8TH MARCH 2025
TIME: 11AM - 4PM**

**VENUE: THE APPLEBY BLUE ALMS
HOUSE 94 -116 SOUTHWARK PARK ROAD
LONDON SE16 3RR (OPPOSITE AGE CONCERN UK)
REVERDY BUS STOP**

**Activities: Arts and crafts, Massage ,
Poetry, Dance, Food and more!**

FOR DETAILS & TO REGISTER
02035369609, 07394662602
 **Admin@parentskills2go.com**
 **parentskills2go.org**

Proudly supported by

