

# Power to the People Year 6 Art/DT Knowledge Organiser

## In Art, we will learn to:

- Use tones and tints
- Create a painting that conveys a message
- Create an emotive portrait
- Identify what sculpture is and identify materials that are used for creating sculptures
- Sculpt with clay

## Tints

A tint is a colour mixed with white. The more white paint that is added to the original colour, the lighter the tint. A tint can range from slightly lighter than the original colour, to almost white. When mixing a tint, begin with the pure colour and add white paint a tiny bit at a time.



tints of red

## Mixing tints, shades and tones

This diagram shows how tints, shades and tones are made.



## Tones

A tone is a colour mixed with grey. Tones are less vibrant than the original colour. Using a tonal colour in a painting balances other intense colours and bright hues. When mixing a tone, begin with the pure colour and add grey paint a tiny bit at a time.



tones of red

## Key Vocabulary

Composition	The way in which something is made
Mould	To change something to fit a specific shape
Contrast	The state of being strikingly different from something else
Carve	Cut meat into slices for eating
Shade	Comparative darkness and coolness Caused by shelter from direct sunlight
Sculpt	Create or represent something by carving, casting or other shaping techniques

## How to draw a portrait

<https://www.youtube.com/watch?v=vz5HDRMEF1E>



# Power to the People Year 6 Art/DT Knowledge Organiser

## Artist Information:

Henry Moore was born in Castleford, Yorkshire, England in 1898. He was a teacher and was in the army before going to Leeds School of Art to learn to become a sculptor. He died in 1986



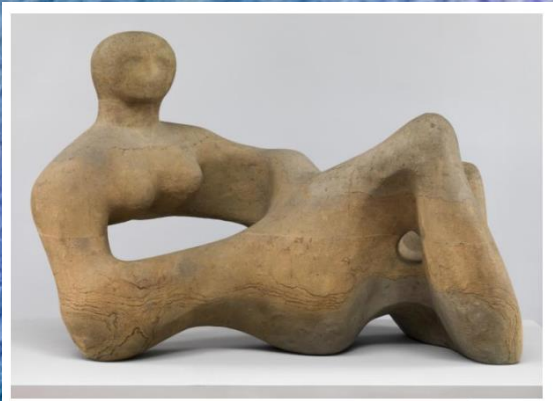
## Henry Moore



## Techniques and Materials:

Henry Moore is famous for his sculptures of people with bumpy forms and hollow spaces in their bodies. As well as bumps and hollows he used flowing, abstract shapes in his sculptures.

Henry Moore is very famous for his sculptures, but he also made sketches in the London Underground during World War II, when the tube stations were used



Moore was inspired by nature. He sketched the hills near where he grew up and collected interesting stones, animal bones and tree roots on his regular walks in the countryside.

Places where sculptures can be seen

<https://www.timeout.com/london/art/top-20-public-sculptures-in-london>

