

## Your child will learn to:

- Create a portrait in the style of Picasso's Blue period
- Create a positive and negative mono print
- Use their sketchbook and pencil to create different types of marks

## Significant artists/crafts people

Picasso , Wahol, Vermeer, Klimt, Arcimboldo, Leonardo Da Vinci, Modigliani, Kehinde Wiley



## Trips/experiences

- Tate Modern

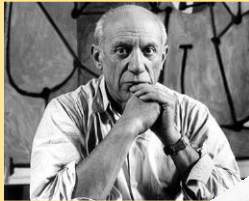


## Vocabulary

<b>Line</b>	A long narrow mark or bend
<b>Vertical</b>	An upright structure
<b>Horizontal</b>	A parallel to the plane of the horizon
<b>Cross hatch</b>	(In drawing or graphics) shade (an area) with intersecting sets of parallel lines.
<b>Smudge</b>	Cause (something) to become messily smeared by rubbing it.
<b>Portrait</b>	A painting, drawing, photograph, or engraving of a person, especially one depicting only the face or head and shoulders.
<b>Negative</b>	Consisting in or characterized by the absence rather than the presence of distinguishing features.
<b>Positive</b>	Consisting in or characterized by the presence rather than the absence of distinguishing features.
<b>Precision</b>	The quality, condition, or fact of being exact and accurate.
<b>Shade</b>	Comparative darkness and coolness caused by shelter from direct sunlight.
<b>Pointillism</b>	A technique of neo-impressionist painting using tiny dots of various pure colours, which become blended in the viewer's eye.

## Did You Know? Interesting Facts about Picasso

Pablo Picasso was one of the most influential artists of the 20th century. His use of form, color, and perspective profoundly impacted later generations of painters, including Willem de Kooning and David Hockney. "There are artists who transform the sun into a yellow spot, but there are others who, thanks to their art and intelligence, transform a yellow spot into the sun," he once said.



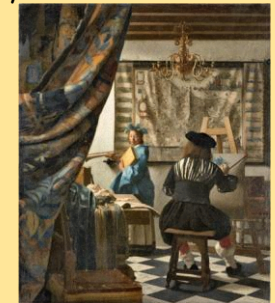
## Who is Leonardo Da Vinci and why was he famous?

Leonardo da Vinci (15 April 1452 - 2 May 1519) was an Italian polymath of the High Renaissance who was active as a painter, draughtsman, engineer, scientist, theorist, sculptor, and architect



## Why is Vermeer so famous?

In his lifetime, Vermeer was not well known outside of his hometown, the walled city of Delft. He only achieved widespread fame for his intimate genre scenes—paintings that depict ordinary people and everyday life—and quiet cityscapes in the late 19th century, several hundred years after his death.



## Kehinde Wiley

Los Angeles native and New York based visual artist, Kehinde Wiley has firmly situated himself within art history's portrait painting tradition.

