



# Weekly Newsletter

## Autumn Term 2

Friday, 3<sup>rd</sup> November 2023



### A Message from our Headteacher

Dear Parents,  
It has been a busy start back to school this week. We have enjoyed looking at the children's topic and art books to see the learning that took place last half of term. You will receive your topic homework for this term's topic by Monday. Please help your child at home to get their topic work complete.

### Author Visit

Next week on Wednesday 8<sup>th</sup> November Banji Alexander will be visiting the school and speaking with the children about his books. Banji's books will be on sale and he will also be around at the end of the school day to sign copies of purchased books.

### Bonfire Night

As you all know it is Bonfire night on 5<sup>th</sup> November. There will be many firework displays and fireworks around over the weekend. Please read the [leaflet](#) at the bottom of the newsletter to know how to keep safe this weekend.

### Children in Need

On Friday 17<sup>th</sup> November we are inviting children to raise funds for Children in Need. Children will be encouraged to bring £1 and come to school in their own clothes. During the day we will be holding a talent show. Children have been invited to audition for the talent show next Friday 10<sup>th</sup> November. A group of 10 final acts will be selected for the talent show which will be held on Friday 17<sup>th</sup> November.

### Diwali

Next week the children will learn about the festival of Diwali during their religious education lessons. They will learn how important "light" is to this traditional festival and what it means to the Hindu religion.

### Remembrance Day

Next week the children will be taught about Remembrance Day. They will learn about soldiers and wars and reflect on the impact war has on a place.

### Warm coats

As the weather is getting colder please make sure your child has a warm coat and that all winter items (jumpers, scarves, hats and gloves) are labelled. Each term we clear out the lost property box and do our best to return labelled items to their owners. Items which are not named are washed and added to our spare uniform box. We will be holding a nearly-new uniform sale next Friday 10<sup>th</sup> November so please bring some cash with you to purchase some uniform if you need some!

### Healthy Eating and Packed Lunches

We have seen an increasing amount of sugary snacks at school over the last few weeks. As a Southwark school we follow the healthy lunch scheme. Please make sure your child does not bring the following items to school in their packed lunch.

- Chocolate bars
- Anything containing nuts (including Nutella products)
- Fizzy drinks
- Sweets
- Doughnuts
- Cakes
- Sweet biscuits such as Oreos

Items such as cereal bars, fruit, a packet of crisps and yoghurts are permitted. Any items that do not follow the rules will be removed and returned to you at the end of the day. We thank you for your support and hope you understand the health benefits we are promoting with your child.

### Parent workshop

On Thursday 9<sup>th</sup> November please come to the Albert McKenzie hall for an EYFS Maths Morning (Moon and Star classes). The workshop will take place at 9.15am.

I hope you have an enjoyable weekend and will see you all on Monday at 8.50am.

Rebecca



# Weekly Newsletter

## Autumn Term 2

Friday, 3<sup>rd</sup> November 2023



# School Information

## Attendance & Punctuality Class Winners of The Week



| School Year<br>Autumn Term | Class                | %            |
|----------------------------|----------------------|--------------|
| Attendance KS1 Winner      | Mars                 | 100%         |
| Attendance KS2 Winner      | Neptune              | 100%         |
| KS1 Punctuality Winner     | Venus                | 97.8%        |
| KS2 Punctuality Winner     | Neptune<br>Supernova | 97.6%        |
| Rest of School             |                      |              |
| Class                      | Punctuality %        | Attendance % |
| Venus                      | <b>97.8%</b>         | 96.3%        |
| Earth                      | 97%                  | 95%          |
| Mars                       | 93.5%                | <b>100%</b>  |
| Jupiter                    | 94.3%                | 92.1%        |
| Galaxy                     | 96.3%                | 97.8%        |
| Supernova                  | <b>97.6%</b>         | 92.4%        |
| Neptune                    | <b>97.6%</b>         | <b>100%</b>  |
| Pluto                      | 93.6%                | 94.4%        |
| Aurora                     | 94.3%                | 97.1%        |
| Sky                        | 95.9%                | 95%          |
| Whole school               | <b>95.8%</b>         | <b>95.6%</b> |

## Dates for the Diary

Important  
DATE!

| HALF TERM 23 <sup>rd</sup> October – 27 <sup>th</sup> October |  |
|---|--|
| 03/11/23  | Fire safety activities taking place for all classes                                |
| 05/11/23  | Bonfire night  |
| 08/11/23  | Local authority visit  |
| 08/11/23  | Author visit – Banji Alexander   |
| 09/11/23  | EYFS Maths coffee morning  |
| 10/11/23  | Classes to learn about Diwali  |
| 10/11/23  | Classes to learn about Remembrance Day   |
| 10/11/23  | Talent show auditions  |
| 12/11/23  | Remembrance Sunday   |
| 12/11/23  | Diwali – Festival of light (Hindu celebration)                                     |
| 13/11/23  | Anti-Bullying week   |
| 13/11/23  | Wear odd socks day for anti-bullying week  |
| 14/11/23  | KS1 Maths coffee morning   |
| 16/11/22  | Yr 3/4 Maths coffee afternoon  |
| 17/11/22  | Children in need – Talent Show – own clothes day                                   |
| 20/11/23  | Yr 5/6 Maths coffee morning  |
| 25/11/23  | White Ribbon Day (international day for the eradication of violence against women) |
| 30/11/23  | School Christmas tree to arrive  |
| 03/12/23  | Advent Sunday  |
| 07/12/23  | Christmas Jumper Day (money raised for save the children)                          |








Mathletics



Winning Class: **Neptune Class**  
School's total points: **35,980**

## House Winners

|  |            |
|--|------------|
| Tim Peake           | <b>775</b> |
| Stephanie Wilson  | <b>682</b> |
| Neil Armstrong    | <b>775</b> |
| Helen Sharman     | <b>866</b> |
| Bernard Harris    | <b>651</b> |



# Weekly Newsletter

## Autumn Term 2

Friday, 3<sup>rd</sup> November 2023



### Happy Birthday to You!

| First Name | Class      | Age |
|------------|------------|-----|
| Dottie     | Sun (Moon) | 4   |
| Daniella   | Supernova  | 9   |
| Sherlyn    | Mars       | 7   |
| Hafsah     | Neptune    | 10  |

### Attendance Ladder

How close is your child to 100%?

|   |      |                |
|---|------|----------------|
| 0 days off school                       | 100% | Perfection     |
| Equates to 2 days off school each year  | 99%  | Excellent      |
| Equates to 5 days off school each year  | 97%  | Good           |
| Equates to 10 days off school each year | 95%  | Slight Concern |
| Equates to 20 days off school each year | 90%  | Concerned      |
| Equates to 30 days off school each year | 85%  | Very Concerned |

### Value of the Week

The value of the week this week was **Love**. Please take some time over the weekend to discuss this value with your children.

"A friend is the purest love. A friend is someone who knows all about you and still loves you."



### Word of the Week

The word of the week this week is "prowl". Please spend some time discussing this word with your child.

#### Shinobi Word of the Day

**Word of the Day:** **prowl**  
(prowl)

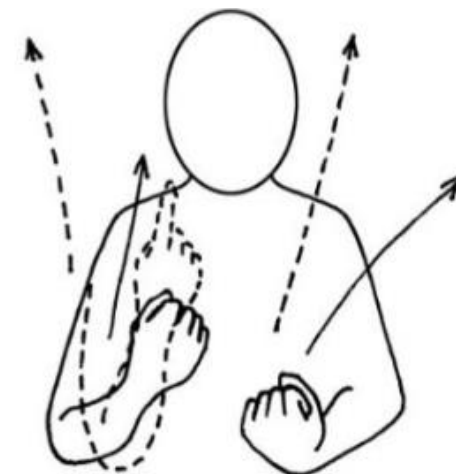
Word Class (verb)

Pronunciation / Syllables

**Definition:**  
If an animal or a person prowls around, they move around quietly, for example when they are hunting.

**Fred was on the **prowl** for a glue stick.**

|                 |                 |                         |               |                   |
|-----------------|-----------------|-------------------------|---------------|-------------------|
| <b>Synonym:</b> | <b>Antonym:</b> | <b>Prefix / Suffix:</b> | <b>Rhyme:</b> | <b>Link Word:</b> |
| skulk<br>sneak  |                 | -ing<br>-ed             | foul<br>towel | around<br>lion    |



fireworks





# Weekly Newsletter

## Autumn Term 2

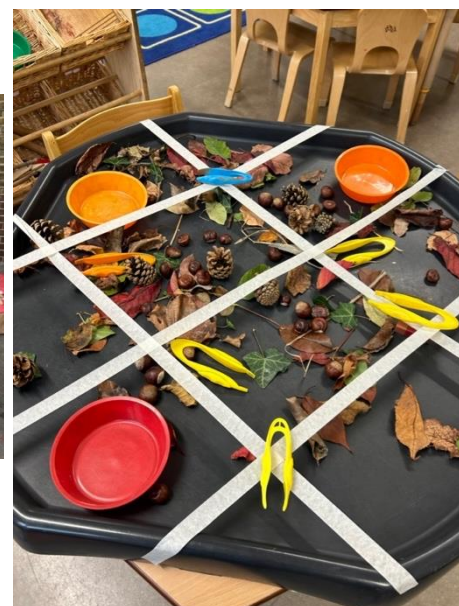
Friday, 3<sup>rd</sup> November 2023



## Class Gallery

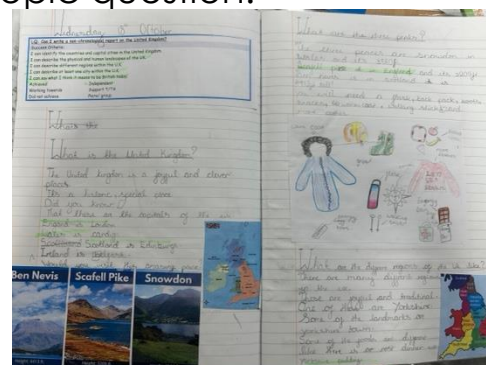
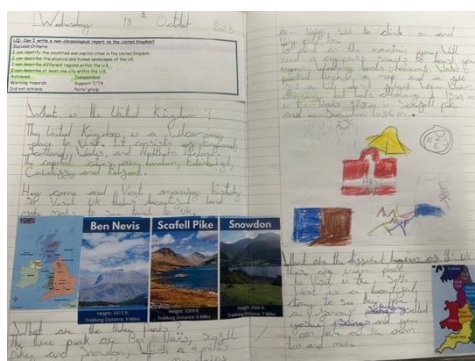
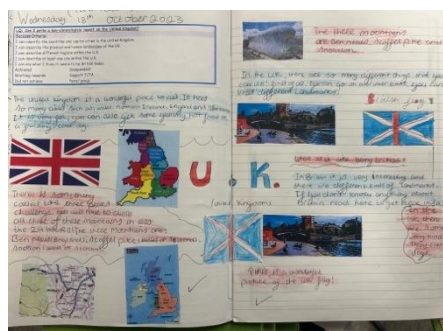
### Reception

Reception have had some very autumnal activities set up for them to explore this week!



### Year 4

Year 4 have been learning all about the UK. They produced some great writing at the end of the unit to answer their topic question.





# Weekly Newsletter

## Autumn Term 2

Friday, 3<sup>rd</sup> November 2023



# Rewards

## Years 1 & 2

Core Value: **Love**  
**Year 1 and Year 2**

| Class: | VIP of the week | Reason for Award:   |
|--------|-----------------|---|
| Venus  | Harley          | Being kind to his friends in class  |
| Earth  | Issam           | For showing love and being a great cheer to his friends when they achieved their own learning goals |
| Mars   | Hannah          | For showing enthusiasm and love for her lessons.  |

| Class | Writer of the week | Reason  |
|-------|--------------------|---|
| Venus | Imad               | Completing his sentence work and using a sound mat to support him.          |
| Earth | Stacy              | For amazing efforts in his handwriting as he practices pre-cursive writing. |
| Mars  | Nyima              | For beautiful presentation in her writing all week.                         |

| Class | Mathematician of the week: | Reason:   |
|-------|----------------------------|---|
| Venus | Alya                       | Showing 'part' and 'whole' work confidently.  |
| Earth | Aisling                    | For working hard at being resilient in her maths lessons this week even when it got tricky. |
| Mars  | Ainhua                     | For putting in extra effort in all areas.   |

| Class: | Reader of the week: | Reason for Award                                      |
|--------|---------------------|---|
| Venus  | Ra'El               | Confidently blending his words in his book.           |
| Earth  | Yallah              | For her efforts in segmenting and blending this week. |
| Mars   | Max                 | For his improved confidence in reading this week.     |



# Weekly Newsletter

## Autumn Term 2

Friday, 3<sup>rd</sup> November 2023



## Rewards

### Years 3 to 6

Core Value: Love

Years 3 to 6

| Class:    | VIP of the week | Reason for Award:  |
|-----------|-----------------|--|
| Jupiter   | Joseph          | For being a responsible member of Jupiter class!                 |
| Galaxy    | Alina           | For always helping her peers.                                    |
| Supernova | Ayaat           | For caring about the classroom environment and helping others.   |
| Pluto     | Rafael          | For showing kindness and a thoughtful attitude                   |
| Neptune   | Narjis          | For having an excellent first week at Grange Primary School!     |
| Aurora    | taylor          | For being polite and caring to members of the class              |
| Sky       | Ashen           | Consistently being a caring and friendly member of the classroom |

| Class     | Writer of the week | Reason   |
|-----------|--------------------|--|
| Jupiter   | Amal               | For working hard to extend his writing by adding more detail!      |
| Galaxy    | Mariam             | For a good start to our writing unit this term!                    |
| Supernova | Jamal              | Fantastic effort in improving his presentation                     |
| Pluto     | Saima              | For putting her best effort into every piece of writing!           |
| Neptune   | Hafsah             | For coming up with some great questions about NASA and NACA.       |
| Aurora    | Anisa              | For remarkable improvement in her writing!                         |
| Sky       | Erion              | Using great skill while drafting and writing his timeline for WW2. |

| Class     | Mathematician of the week: | Reason  |
|-----------|----------------------------|---|
| Jupiter   | Jannet                     | For her love of learning and for always being up for a mathematics challenge! |
| Galaxy    | Anes                       | For great addition of 10, 100, and 1000!                                      |
| Supernova | Sanusi                     | Excellent effort in solving addition problems.                                |
| Pluto     | Jeremiah                   | For trying new strategies and always explaining his thinking                  |
| Neptune   | Celina                     | For showing great determination and perseverance in maths lessons.            |
| Aurora    | Harry                      | For his excellent knowledge of multiplication facts!                          |
| Sky       | Kayla                      | Trying her best with factors and multiples.                                   |

| Class:    | Reader of the week: | Reason  |
|-----------|---------------------|---|
| Jupiter   | Scarlett            | For working hard using expression!  |
| Galaxy    | Amadou              | For reading daily at home!  |
| Supernova | Isha                | Becoming a fluent reader.   |
| Pluto     | Ramatullai          | For making great predictions about our text, The Polar Bear Explorers Club. |
| Neptune   | Nils                | For making a dramatic plausible prediction for our new class text!          |
| Aurora    | Whole-class         | For the enthusiasm shown for our book about Anne Frank.                     |
| Sky       | Nelly               | Carefully inferencing and responding to questions about texts.              |



# Parent/ Carer Information and Support

MEET



**Banji Alexander**

AUTHOR OF  
LOCKDOWN LOOMS  
REGGIE'S BIRTHDAY PARTY

AS SEEN ON:



WEDS  
8TH NOV

VISIT: [WWW.LOCKDOWNLOOMS.COM](http://WWW.LOCKDOWNLOOMS.COM)

CELEBRATED AUTHOR, BANJI  
ALEXANDER WILL BE VISITING OUR  
SCHOOL ON WEDNESDAY 8TH  
NOVEMBER, TO TALK ABOUT HIS  
VERY SPECIAL BOOK AND TO SIGN  
COPIES!

**WHAT QUESTIONS DO YOU HAVE FOR  
HIM?**

PRE-ORDER BOOKS VIA THE  
SCHOOL, FOR £10!



# T H E



# F A C T O R

Friday 17th November

Grange will be raising money for Children in Need.

The charity's aim is to improve the lives of thousands of children by ensuring that their childhood is safe, happy and secure. They want to give every child the chance to reach their full potential in life.

To raise money, we encourage all children to donate £1 and wear their own clothes, or Pudsey inspired wear.

Grange will be hosting a Talent Show for children to audition and show case a particular skill or talent they may have to their peers on the day.





**FIREWORKS  
USE THEM SAFELY!**

**LFB**  
LONDON FIRE BRIGADE

Fireworks can be fun but take extra care – plan ahead and always follow the firework code.

### THE FIREWORK CODE

- Only buy fireworks that have a CE mark, from licenced retailers.
- Don't drink alcohol if setting off fireworks.
- Keep fireworks in a closed box and use them one at a time.
- Read and follow the instructions on each firework, using a torch if necessary.
- Light the firework at arm's length with a taper and stand well back.
- Always supervise children around fireworks.
- Never return to a firework once it has been lit.
- Light sparklers one at a time and wear gloves. Keep a bucket of water close by.
- Never give sparklers to a child under five years old.
- Don't put fireworks in pockets and never throw them.
- Don't let off fireworks after 11pm.
- Always keep pets indoors.

**REMEMBER:** Wherever possible, attend an organised firework display.

### IF YOU ARE HAVING A BONFIRE:

- build the bonfire away from sheds, fences and trees
- never use paraffin or petrol on a bonfire
- make sure that the bonfire is out and surroundings are made safe before leaving.

For more information visit [london-fire.gov.uk](https://london-fire.gov.uk)





A space for families to  
meet an artist and  
get drawing!

• ROCK • PAPER •  
SCISSORS •

# FAMILY



# STUDIO

With artists Anna Paterson, Dunya Kalantery,  
Habiba Nabisubi, Olivia Twist and Rhys Coren.

5th November, 3rd December, 14th January,  
4th February, 3rd March, 7th April, 5th May,  
2nd June, 7th July, 4th August

Drawing Room, New Tannery Way, Bermondsey  
London, SE1 5WS. Enter from Grange Road

Bus Routes:  
1, 78, C10, 42  
Stations: Bermondsey,  
London Bridge

07438 277 020  
genevieve@drawingroom.org.uk  
www.drawingroom.org.uk  
@drawingroom\_ldn/

Supported by  
Freelands  
Foundation

Drop-in  
10.30 – 3.00pm  
All Free!  
All Welcome!

**DRAWING ROOM**