



# Grange Primary School Newsletter Friday 3rd September 2021



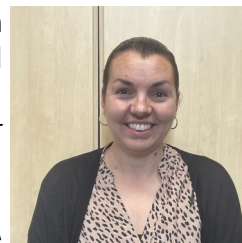
## Quote for the week:

*"A new school year means new beginnings, new adventures, new friendships, and new challenges. The slate is clean and anything can happen." - (Denise Witmer)*

WELCOME BACK !

Dear Grange families,

Thank you all so much for welcoming me into your community. I have met many of you over the past few days and everyone I have met has greeted me with kindness and a smile. My first two days at Grange have been fantastic and I am really excited about the journey ahead. It has been great to see all of the children back in school this week. We have had a gentle start, getting used to new routines, remembering the rules and school values, meeting new teachers and completing some fabulous art work. All of the children have adapted amazingly well and seem very happy to be back. Next week we will begin to get back to normality, children will start formal lessons including Physical Education. Please remember to send your child to school in the school PE kit. A message will be sent to you on Parentmail early next week specifying your child's PE day.



I am sure many of you have questions for me regarding my ideas for the school. I would like to invite you to an informal coffee meeting where I will talk through some of my plans and discuss suggestions you might have to support the continued development of Grange. It is my duty of care to keep you and your children safe so there will be limited space at each meeting. If you would like to attend please call the school office on: **0207 771 6121**, to book a place. Meetings will be held on Friday, 10th September at 9.15am and 2.15pm in the Albert McKenzie Hall. For those of you who have not seen or met me yet, please do look out for me on the school gate at the start and end of the school day.

I look forward to seeing you all bright and early next week. Have a lovely weekend in the sunshine.

*Rebecca*

Rebecca Benjamins  
Headteacher

Coffee Morning



Belong

Believe

Achieve



# Grange Primary School Newsletter Friday 3rd September 2021



## Staggered School Times

As you are aware, the Government has lifted many restrictions for schools with regards to COVID 19. Although many constraints have been removed, we have decided to continue to be cautious. Children will continue to have a staggered start and end to the day to avoid mass gatherings. Parents of children in Nursery & Reception will continue to collect from the Early Years gate.

**Please be prompt!**

**Nursery 9:00am 3:20pm**

**Reception 8:45am 3.10pm**

**Year 1 8:45am 3:05pm**

**Year 2 8:45am 3:05pm**

**Year 3 8:55am 3:15pm**

**Year 4 8:55am 3:15pm**

**Year 5 and 6 9:05am 3:20pm**



## School Uniform Reminder



Children should be dressed in full school uniform daily and their names labelled on uniform.

On the class PE day, children may come to school dressed in their PE kit. **The school PE kit consists of, black shorts or jogging bottoms, a white T-shirt, and black trainers**, which are available in most High Street stores, or from our uniform provider MAPAC <https://www.mapac.com/education/parents/uniform/grangeprimaryschoolse14rp>

Please ensure your child is dressed appropriately for school. Class teachers will be sending out a Class Newsletter shortly, specifying the class PE day.

mapac®

## Water Bottles



Our water fountains will be switched back on, but children may only use these to fill their water bottles. Please make sure your child's water bottle is labelled.



Belong

Believe

Achieve



# Grange Primary School Newsletter Friday 3rd September 2021



## Diary Dates

Autumn Term	Date/s
INSET day for Staff (School closed)	Wednesday, 1 <sup>st</sup> September 2021
First day of Autumn Term	Thursday, 2 <sup>nd</sup> September 2021
Half term (School closed)	Monday, 25 <sup>th</sup> October 2021 to Friday, 29 <sup>th</sup> October 2021
INSET day for Staff (School closed)	Monday, 1 <sup>st</sup> November 2021
First day after half term	Tuesday, 2 <sup>nd</sup> November 2021
Last day of Autumn Term	Friday, 17 <sup>th</sup> December 2021
<b>CHRISTMAS HOLIDAY (School closed)</b>	Monday, 20 <sup>th</sup> December to Monday, 3 <sup>rd</sup> January 2022
Spring Term	Date/ s
INSET day for Staff (School closed)	Tuesday, 4 <sup>th</sup> January 2022
INSET day for Staff (School closed)	Wednesday, 5 <sup>th</sup> January 2022
First day of Spring Term	Tuesday, 6 <sup>th</sup> January 2022
Half term (School closed)	Monday, 14 <sup>th</sup> February 2022 to Friday, 18 <sup>th</sup> February 2022
First day after half term	Monday, 21 <sup>st</sup> February 2022
Last day of Spring Term	Thursday, 31 <sup>st</sup> March 2021
INSET day for Staff (School closed)	Friday, 1 <sup>st</sup> April 2022
<b>EASTER HOLIDAY (School closed)</b>	Monday, 4 <sup>th</sup> April 2022 to Monday, 18 <sup>th</sup> April 2022
Summer Term	Date/s
First day of Summer Term	Tuesday, 19 <sup>th</sup> April 2022
May BANK Holiday	Monday, 02 <sup>nd</sup> May 2022
Half term (School closed)	Monday, 30 <sup>th</sup> May 2022 to Friday, 3 <sup>rd</sup> June 2022
First day after half term	Monday, 6 <sup>th</sup> June 2022
Last day of Summer Term	Friday, 22 <sup>nd</sup> July 2022
<b>SUMMER HOLIDAY (School closed)</b>	